

The background of the advertisement is a photograph of a ship's hull, painted in a light grey or off-white color. On the left side, there is a white searchlight mounted on a metal platform. The hull is marked with large, stylized red letters that appear to be 'S' and 'V'. At the bottom of the image, there are several white pipes and two rectangular light fixtures mounted on the hull. The sky is a clear, bright blue.

# **NAVAL LED light fixtures**

 **Fabas**  
NAVAL & MARINE LIGHTING



OVER THE YEARS, **STEFANO AND DONATELLA GIBERTI** AND **FABIO CASTELLI** HAVE CHANGED THE FACE OF THE COMPANY. THIS HAS RESULTED IN CONTINUOUS EXPANSION IN THE NATIONAL AND INTERNATIONAL LIGHTING MARKET. TODAY, THE HEADQUARTERS OF FABAS LUCE IS A LARGE FACTORY WITH A **STATE-OF-THE-ART LOGISTICS SYSTEM**, WITH SPECIAL SENSITIVITY TOWARDS ENERGY SAVING AND ENVIRONMENTAL SUSTAINABILITY. NEVERTHELESS, INCREASED PRODUCTIVITY HAS NOT AFFECTED THE PROFOUND **SENSE OF ETHICS** DESIRED BY THE OWNERS AND THE AIM OF FABAS LUCE IS ALWAYS THE SAME: TO CONTINUE TO BE SUCCESSFUL WITH ITS PRODUCTS IN ITALY AND AROUND THE WORLD, WITH RESPECT FOR PEOPLE AND REGULATIONS.



FIND OUT MORE

ATAILED NAVAL IS THE FABAS LUCE DIVISION THAT DESIGN AND MANUFACTURE IN ITALY THE MOST COMPREHENSIVE AND INNOVATIVE RANGE OF **LED LIGHT FIXTURES AND FLOOD LIGHTS THAT ARE SPECIFICALLY CONCEIVED FOR CONTINUOUS DUTY TO ILLUMINATE THE MODERN MILITARY AND CRUISE SHIPS.**

WE HAVE THE PERFECT MIX OF VERY HIGH LUMINOUS FLUX AND EFFICIENCY, REDUCED DIMENSION AND WEIGHT, LOW CONSUMPTION FOR EFFECTIVE ENERGY SAVING AND MANY YEARS AT NO MAINTENANCE.

OUR LIGHT FIXTURES HAVE THE BEST TECHNICAL AND MANUFACTURING FEATURES CERTIFIED BY THE COMPLIANCE TO THE MOST RIGOROUS TECHNICAL REGULATIONS APPLIED IN THE MARITIME FIELD.

OUR LIGHT FIXTURES RANGE IS VERY WIDE BUT WE ARE ALWAYS OPEN TO EVALUATE CUSTOMER SPECIFIC NEEDS TO REALIZE TAILORED LED LIGHT SOLUTION.



WATCH THE VIDEO

**ON OUR LED LIGHT FIXTURES WE HAVE EXECUTED AND PASSED (WITHOUT THE USE OF RESILIENT MOUNTING HARDWARE) THE HIGH IMPACT SHOCK TEST ACCORDING TO MIL S 901 D AND WE GOT THE TOP CLASSIFICATION AS:**

**GRADE A**

**CLASS I**

**TYPE A**



# NAVAL LED light fixtures

more than 30.000 supplied  
in the last 5 years

**ZERO REMARKS or FAILURES**

after more than 35.000 hours of continuous duty



Designed and made in Italy

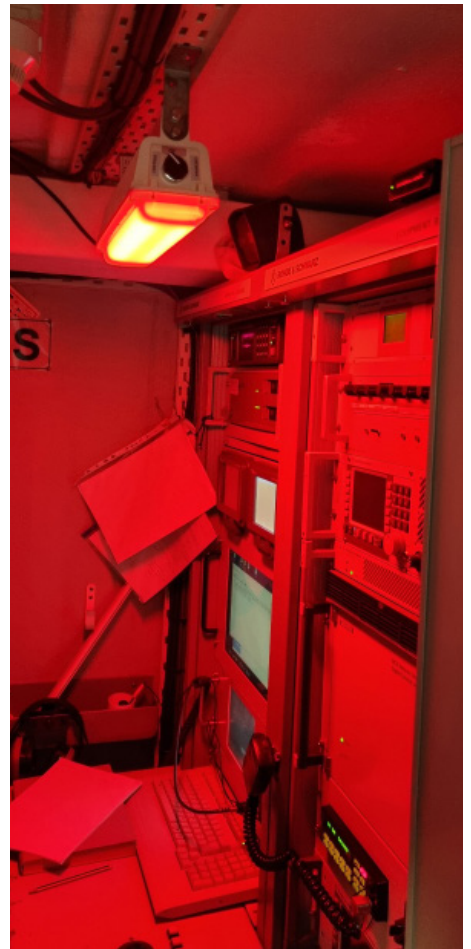
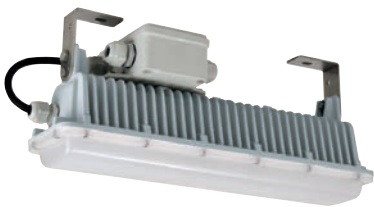
# ON NAVAL MARKET OUR WIDE LED LIGHT FIXTURES RANGE THAT FULFILL COMBATANT SHIP REQUIREMENTS HAVE THE BEST VALUE FOR MONEY



# TVE

## VERSATILE AND MULTIPLE FUNCTIONS IN THE SAME TYPE REDUCED DIMENSION LED LIGHT FIXTURE

**TVE** is sturdy general purpose LED lighting fixture is available in more than 50 different versions. Its reduced dimension and weight make easy to install even in quite "busy" ceiling full of hoses, pipes and ducts in ship machinery spaces.



# TON

## POWERFUL LED FLOODLIGHTS

**TON** is a powerful LED floodlight available with different:

- luminous beam: narrow, medium or wide
- light colors: white, red, blue, green



# EBLAN

## PORTABLE EMERGENCY LED BATTLE LANTERN WITH RECHARGEABLE BATTERY FLOATING IP67 – SHOCK PROOF



### INTERNATIONAL STANDARDS TEST PERFORMED AND PASSED

IEC 60092-306: 2009 publication Electrical installations in ship Part 306: Equipment - Luminaires and lighting accessories

IEC 60533-2015 publication Electromagnetic compatibility (EMC) approved for "Bridge and deck zone" the best category

EBLAN with no use of resilient mounts has executed and passed the MIL-S 901D: 1989 High Impact Shock Test Shipboard Equipment and is classified as "Grade A Class I Type A" the best category

# LED LIGHT FIXTURES FOR HAZARDOUS AREAS AND EXPLOSIVE ATMOSPHERE

**PEX** white light, option together with red, green or blue,

**GEX** white light

**GLOBE** white light, option red, green, blue, amber colors

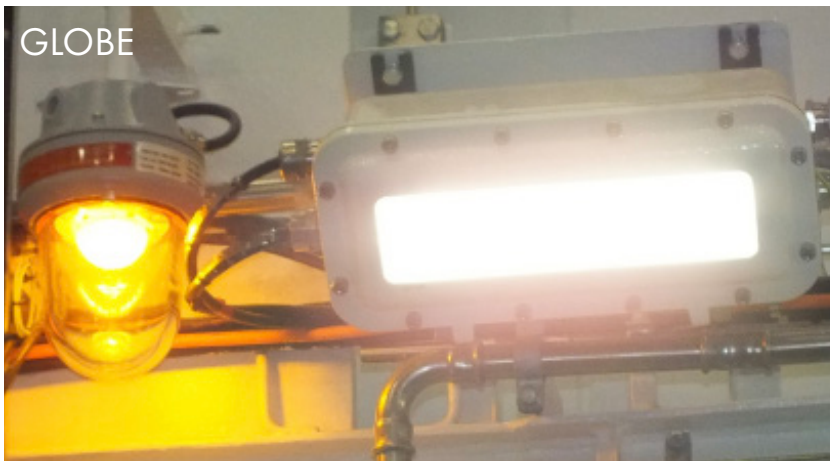
GEX



PEX

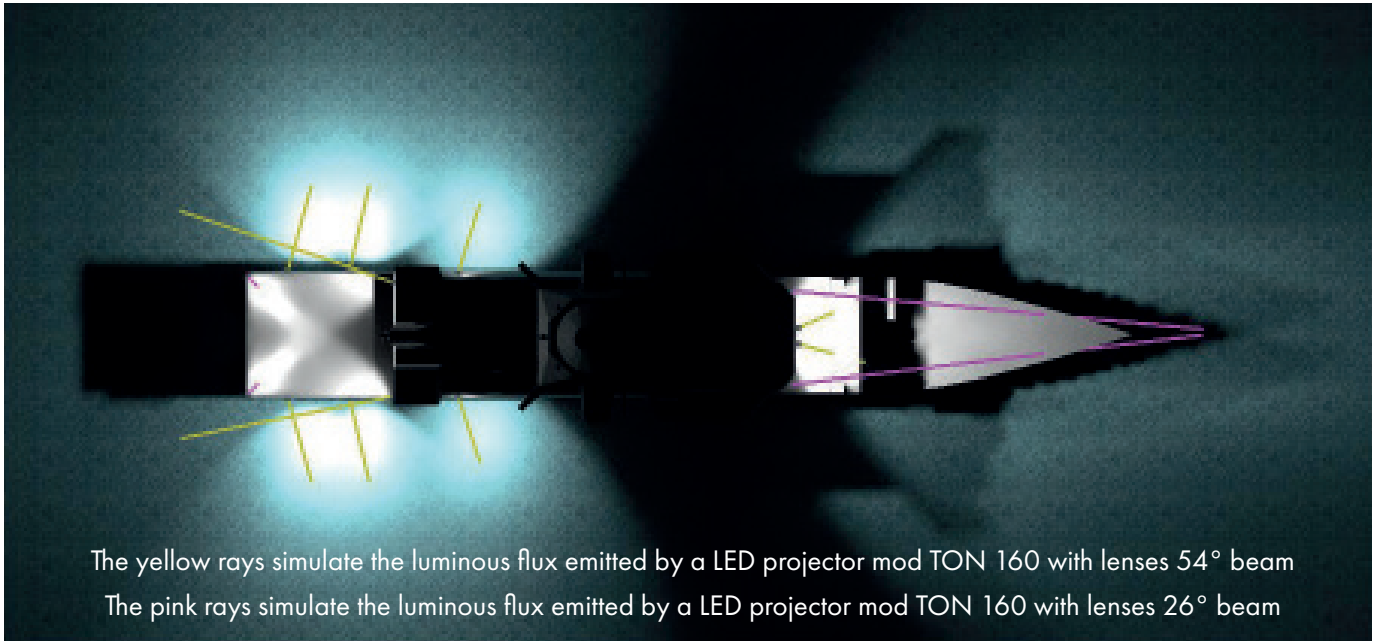


GLOBE

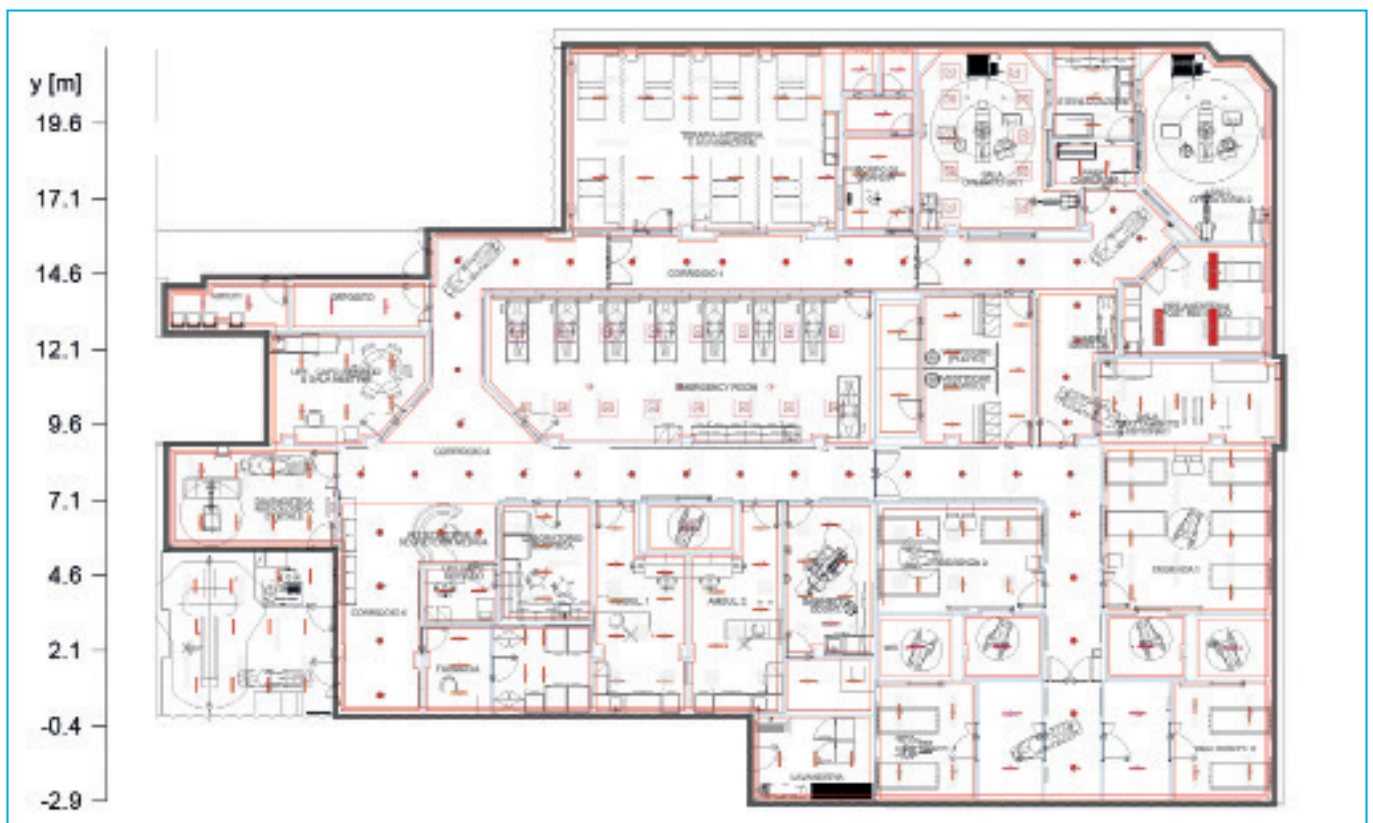


## LIGHTING DESIGN

Stern and bow manoeuvring areas and sea portion surrounding the fast 65m OPV ship illuminated by TON LED flood light

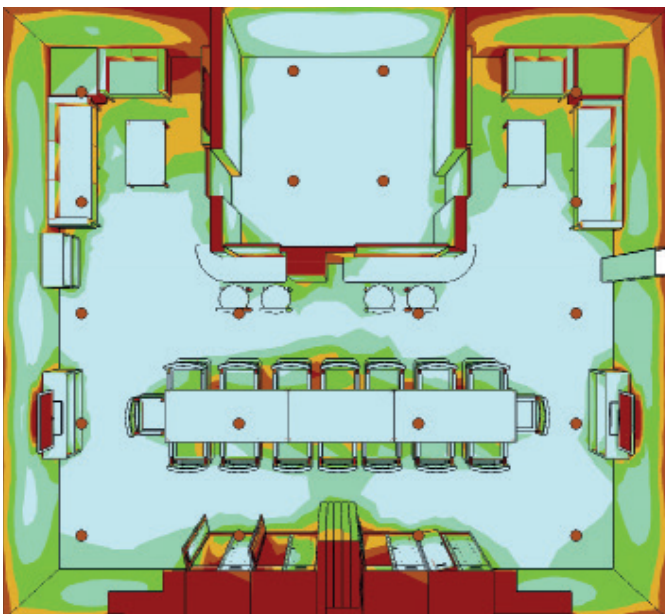


Role 2E NATO standard hospital on LHD navy ship

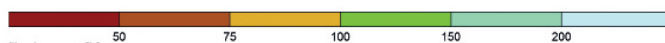
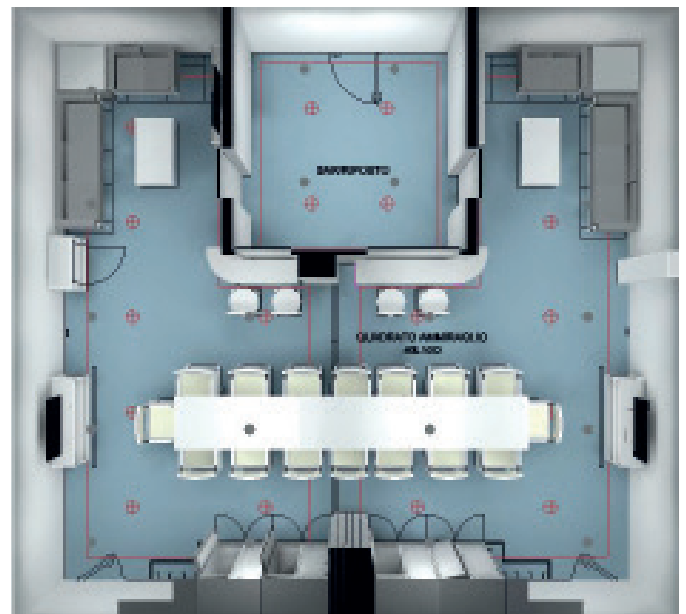


# RENDERING AND LIGHTING DESIGN

Admiral meeting room on LHD navy ship



luminous flux



LUX color scale

# THE NAVY SHIPS WE SUPPLIED WITH OUR LED LIGHT FIXTURES

LSS Logistic Support Ship - 176 m - 27.000 ton



FREMM frigate 145 m - 6.900 ton



U212 Submarine  
57 m - 1.500 ton



PPA multipurpose offshore patrol vessel  
143 m - 6.000 ton

LHD Landig Helicopter Dock  
214 m - 33.000 ton



Corvette  
107 m - 3.250 ton

## REFERENCE LIST OF NAVY SHIPS SUPPLIED WITH OUR LED LIGHT NAVAL FIXTURES updated February 2025

14 - V.3.0

years beginning - end	Owner	num- ber of ships	type	note
2026 - TBD	Italian Navy	2	DDX destroyer	new build
2025 - TBD	Italian Navy	2	FREMM EVO frigates	new build
2025 - TBD	Italian Navy	2	Multipurpose Combat Ship - MCS [former PPA - EVO]	new build
2025 - TBD	Italian Navy	4	Hight seas tug boat	new build
2024 - TBD	Italian Navy	4	Harbour tug boat	new build
2025 - 2027	Italian Navy	2	Auxiliary units [MTC/MTF]	new build
2025 - 2027	Italian Navy	4	Training ship	new build
2025 - TBD	Spanish Navy	5/7	F1 to frigate Bonilaz class	new build
202/ - TBD	ISPRA Italian Institute for Ambiental Research	1	Oceanographic research vessel	new build
2025 - TBD	Italian Navy - ITN	2	HORIZON class	Complete LED refit
2025 - TBD	Italian Navy	4	U212 - NFS submarine	new build
2025 - 2027	Italian Navy	2	Submarine Sauro class - fourth batch	new build
2025 - TBD	Italian Navy	3	OPV Offshore Patrol Vessels	new build
2026 - TBD	Navies forecasted ships: France 6, Greece 1, Italy 8, Spain 6	24	EPC European Patrol Corvette	new build
2024 - 2026	Italian Navy	1	NlOM Hydro Deaunugraphich Ship	new build
2024 - 2027	Italian Navy	1	SDO SuRS - Special and Diving Operations Submarine Rescue Ship	new build
2024 - 2027	Italian Navy	12	Mine hunter	new build
2021:	Italian Navy	1	VEGA ship	Complete LED refit
2024	Italian Navy	1	ETNA ship - fleet tanker	Complete LED refit
20214 - TBD	Italian Coast Guard	1	UAM 90m patrol boat (2 in options)	new build
2023	Marine Nationals [France]	1	Commandant Blaison - aviso Direction Service Soutien de la Flotte	Complete LED refit
2023	Slovenian Navy	1	Triglav	Complete LED refit
2022	Italian Navy	2	FREMM frigates	new build
2022 - TBD	6 Belgium. 6 Holland, 6 France	18	MCMV Mine Counter Measures Vessel	new build
2022	Qatari Navy	1	LPD Landing Platform Dock	new build
2022	Italian Navy	1	Sail training school nave Palinuro	new build
2022 - 2029	Marine Nationals [France]	4	Ravitailleurs de Forces [BRF] - Chantier de l'Atlantique	new build
2022	Italian Coast Guard	1	CURSI ship	
2021 -TBD	Guardia at Finanza [sea police]	7	CPV Coastal Patrol Vessel Mm	new build
2021	Italian Navy	1	LHD Landing Helicopter Dock "Trieste" ship	new build
2020 - 2025	Italian Navy	1	Air carrier "Cavour" ship	Complete LED reht
2019 - 202/4	Italian Navy	4	Submarine U212	Complete LED reht
2019 - 2021	Qatari Navy	2	OPV Offshore Patrol Vessel	new build
2019 - 2022	Elatari Navy	4	Multimission corvette	new build
2018 - 2025	Italian Navy	5	Multipurpose Combat Ship - MCS (former PPAJ	new build
-	Indonesian Navy	2	Multipurpose Combat Ship - MCS [former PPA]	new build
2017	Italian Navy	1	sail training school ship "Palinuro"	Complete LED refit
2018 - 2020	Italian Navy	2	UNPAV high speed navy special forces patrol vessels Mm	new build
2017 - 2024	Italian Navy	3	LSS Logistic Support Ship "Vulcano"	new build
2016	Venezuelan Navy	1	U 209 submarine	Complete LED refit
2016	Italian Navy	1	Sail training school ship "Amerigo Vespucci"	Complete LED refit
2015 - 2021	Algerian Naval Force	3	Mine hunter	new build
2014	Algerian Naval Force	1	LPD Landing Platform Dock	new build

# **VERY WIDE RANGE OF LED NAVAL LIGHT FIXTURES DESIGNED AND PRODUCED HAVING IN MIND THE REAL COMBACTANT NAVY SHIP NEEDS**

We have the complete well proven LED light fixture ship set for: technical spaces, weather deck, living areas, EX explosion proof areas, NVG Nigh Vision Google compatible, flood lights.

The fixtures we produce are the second generation of our genuine "native" LED lights carefully built for naval use. We design the housing around a specific purpose LED board also conceived by us, in order to obtain the desired amount of luminous flux (lux) and best performances.

The results are top quality extremely robust LED lights fixtures that assure many benefits on board of navy ships: very high performances, compact dimensions, reduced weight and energy consumption, almost maintenance free.

Our rugged LED light fixtures are the best and perfect combinations for marine harsh environment and modern Navy ships where the space on board is very scarce due to continuous increase of different equipments installed.

Fabas Luce spa is solid and reliable family owned company with more than 40 years of experience in international lighting market Read more on "Fabas Luce spa company profile" in English at link

<http://naval.atiled.it/en/company-profile.html>

Turnover average in the last 3 years Euro 11 million

Direct employees 45 - Indirect employees 105

Italy Headquarter 10.000 square meter

Export rate 80% circa

Since 2007 we have our daughter company in Germany: FABAS LUCE GmbH



## OUR WIDE RANGE WELL PROVEN ON SHIPS AT SEE OF NAVAL LED LIGHT FIXTURES

**NVG compatible models available LED light colors: Red, White, Blue, Green**  
**Compliant to "Stage 3 NVD compatible" NATO standard MPP-02 -**  
**NVG Night Vision Device/Goggles**



HIGH EFFICIENCY LED  
FLOODLIGHT IP67



HIGH EFFICIENCY COMPACT  
LED FLOODLIGHT



VERY COMPACT, VERSATILE  
AND POWERFUL LED LIGHT  
FIXTURE



2 INDEPENDENT LED LIGHTS  
WHITE + RED OR BLUE,  
OPTION SWITCH FOR COLOR  
SELECTION



LED LIGHT FIXTURE INOX  
USPHS COMPLIANT IP67



COMPACT POWERFUL IP67  
LED LIGHT FIXTURE  
FOR CRUISE SHIP  
TECHNICAL SPACES  
AND OPEN DECKS



RECESSED ROUND  
LED LIGHT FIXTURE



HOSPITAL AREAS,  
SURGERY ROOMS



COMPACT EX HAZARDOUS  
AREA EXPLOSION PROOF LED  
LIGHT FIXTURES IP66



POWERFUL AND COMPACT EX  
HAZARDOUS AREA  
EXPLOSION PROOF LED LIGHT  
FIXTURES



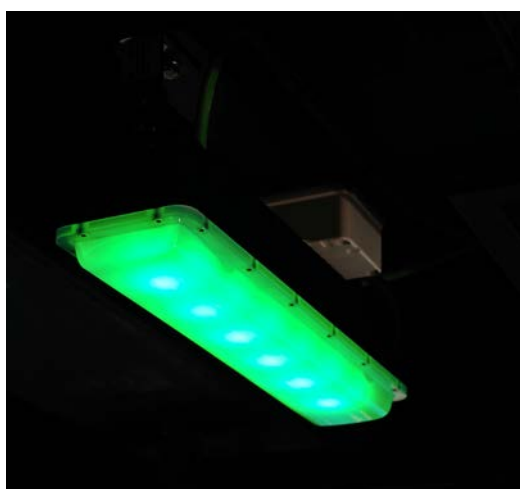
LED GLOBE WHITE NATURAL  
LIGHT OR COLORED LIGHT



EMERGENCY LED  
BATTLE LANTERN FULLY  
MICROPROCESSOR DRIVEN  
PORTABLE AND FLOATING  
IP67 WITH RECHARGEABLE  
BATTERY



**OUR VERY WIDE LED LIGHT FIXTURE RANGE COVER MORE THAN 95%  
OF THE DIFFERENT TYPES OF LIGHTS NEEDED ON BOARD OF NEW  
BUILDINGS OR FOR SHIPS REFURBISHMENT.**



**TRAINING SCHOOL SAILING SHIP AMERIGO VESPUCCI SAID AS THE "MOST BEAUTIFUL IN THE WORLD" IS PRIDE AND VAUNT OF ITALIAN NAVY. THE ITALIAN FLAG IS MADE WITH OUR COLOR LED FLOOD LIGHTS.**



WATCH  
THE VIDEO





**HANGAR, OPEN DECKS,  
MANEUVERING AREA,  
RESCUE AREA, OUTSIDE AND  
INSIDE TECHNICAL SPACE,  
CABINS, MESS ROOMS,  
BRIDGE, MACHINERY SPACES,  
HOSPITAL. IN OUR WIDE LED  
LIGHT FIXTURE RANGE THERE  
IS ALWAYS THE PROPER  
SOLUTION FOR THE BEST AND  
ACCURATE ILLUMINATION.**

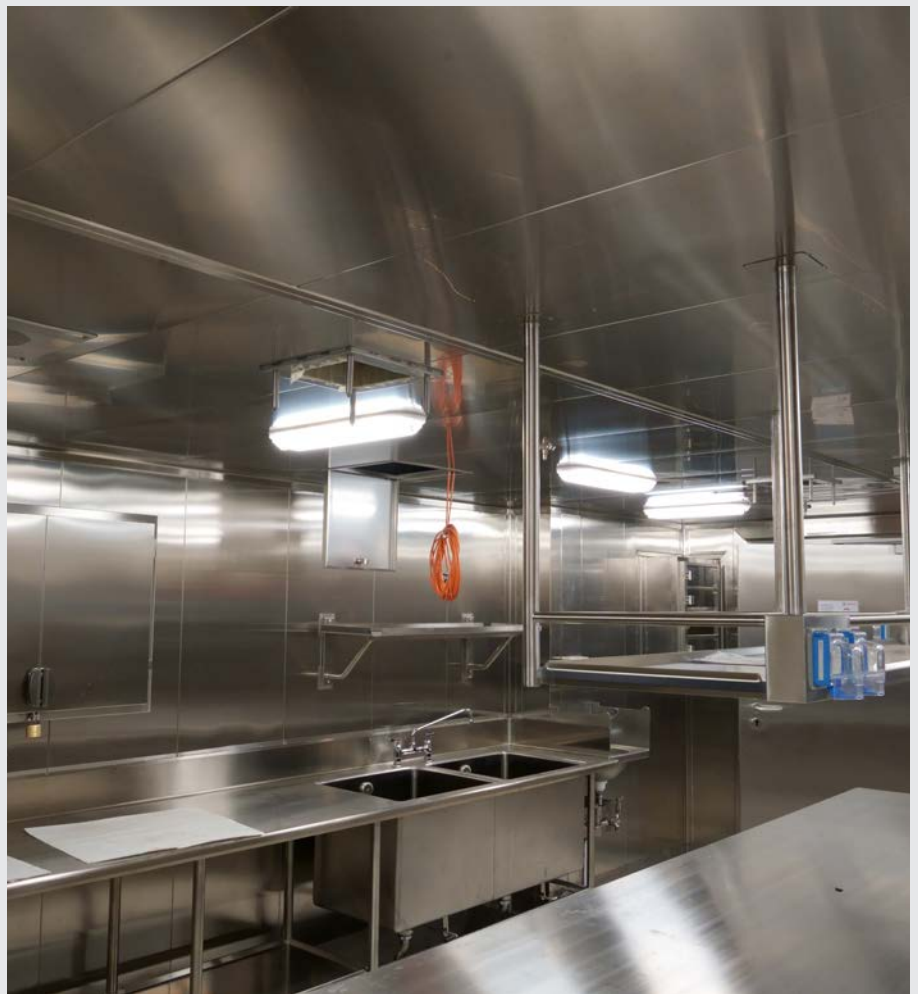


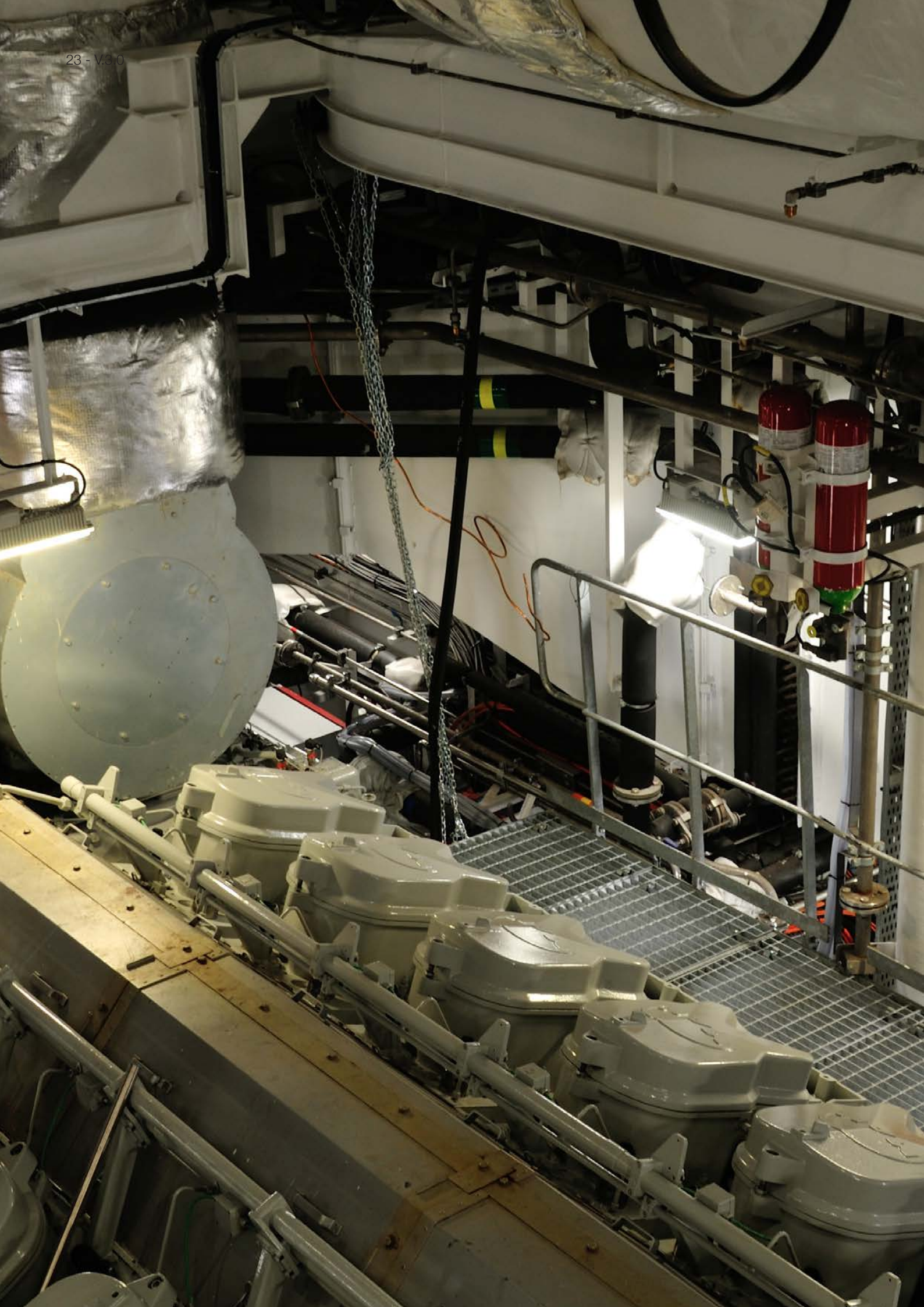




**GALCOR**

**VERY LOW HEIGHT, POWERFUL  
AND OMOGENOUS LED LIGHT,  
THE MOST INNOVATIVE  
STAINLESS STEEL AISI  
316L LED LIGHT FIXTURE  
USPHS COMPLIANT FOR:  
GALLEY, COLD AND FREEZER  
ROOMS, LAUNDRY, CBRN  
CHEMICAL, BIOLOGICAL,  
RADIOLOGICAL AND NUCLEAR  
DECONTAMINATION STATIONS.**







#### Headquarter

#### FABAS LUCE S.p.A.

Via Luigi Talamoni, 75  
20861 BRUGHERIO (MB) Italy  
Tel. 0039 039 214 22 06  
0039 039 89 06 91  
Fax 0039 039 214 22 08  
[www.fabasluce.it](http://www.fabasluce.it)  
[info@fabasluce.it](mailto:info@fabasluce.it)

#### FABAS LUCE GmbH

Westring, 5  
D-59759 ARNSBERG Germany  
Tel. +49 29 32 / 8 90 16 60  
Fax. +49 29 32 / 8 90 16 62  
[www.fabasluce.com](http://www.fabasluce.com)  
[vertrieb@fabasluce.com](mailto:vertrieb@fabasluce.com)



Company profile